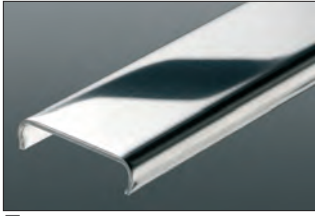
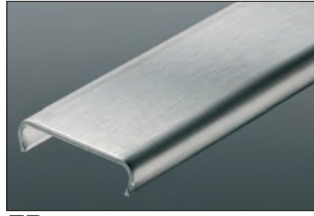


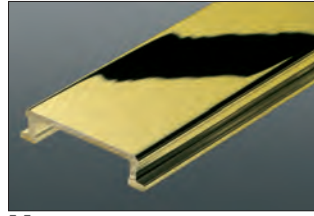
## Available Finishes



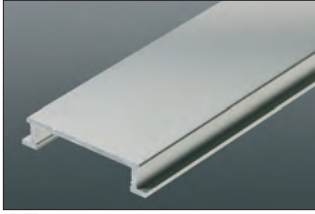
**E** Stainless steel 304 (1.4301=V2A)



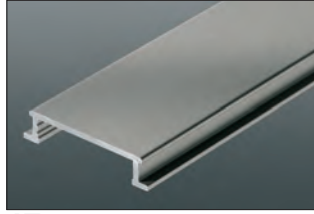
**EB** Brushed stainless steel 304 (1.4301=V2A)



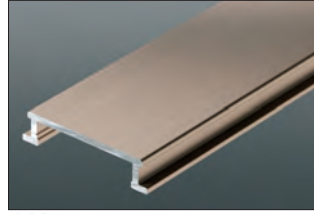
**M** Solid brass



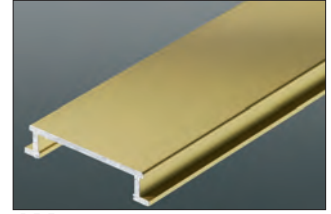
**AE** Satin anodized aluminum



**AT** Satin nickel anodized aluminum



**AK** Satin copper/bronze anodized aluminum



**AM** Satin brass anodized aluminum