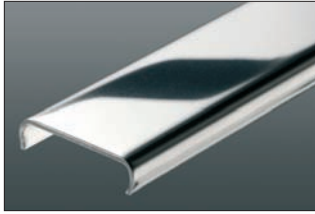


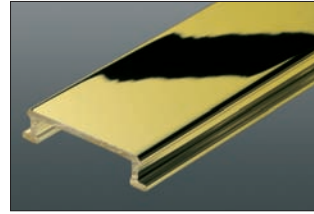
## Available Finishes



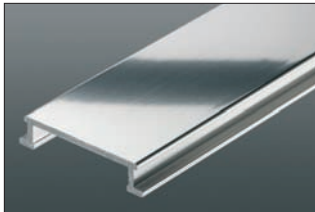
**E** Stainless steel 304 (1.4301=V2A)



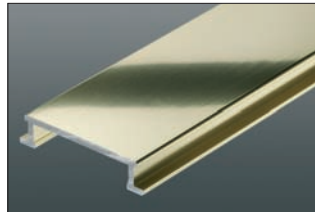
**EB** Brushed stainless steel 304 (1.4301=V2A)



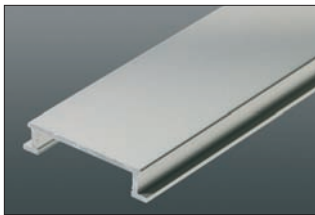
**M** Solid brass



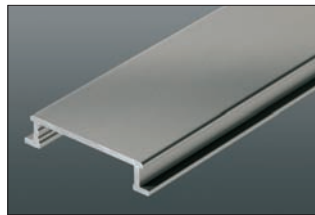
**ACB** Bright chrome anodized aluminum



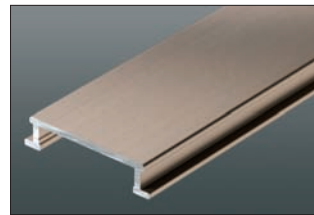
**AMB** Bright brass anodized aluminum



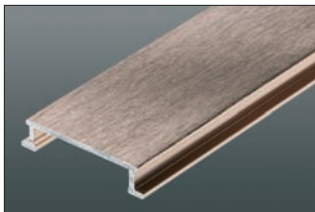
**AE** Satin anodized aluminum



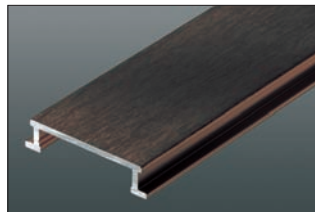
**AT** Satin nickel anodized aluminum



**AK** Satin copper/bronze anodized aluminum



**AKGB** Brushed copper/bronze anodized aluminum



**ABGB** Brushed antique bronze anodized aluminum